

## DATA SHEET

### BH-104

Description: 2 ply European belt, fabric bottom, inverse pyramid PVC top (waffle structure)

Applications: Food Conveying and General Conveying where white belting is desired

Features: Anti-static, FDA compliant, monofilament carcass

#### Technical Data:

Overall Thickness: 0.08 inches / 2.0 mm

Minimum Pulley Diameter: 1.0 inches / 25 mm

Pull for 1% Elongation: 46.0 lbs per inch / 8.0 N per mm

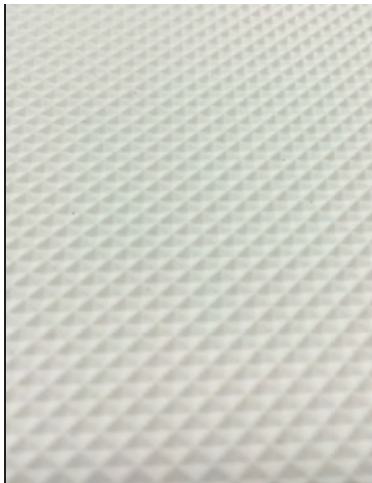
Maximum Admissible Strength: 46.0 lbs per inch / 8.0 N per mm

Coefficient of Friction vs Kraft Board - Cover: 0.7  $\mu$

Color: White

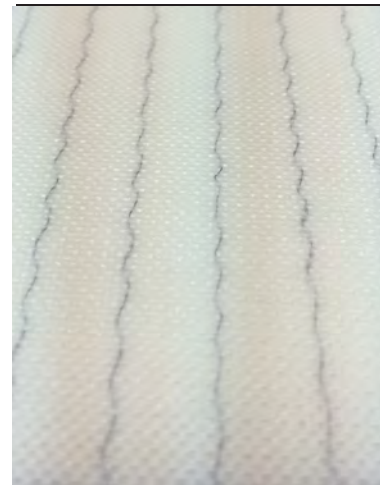
Maximum Width: 118 inches / 3000 mm

Recommended Joining Methods: Finger Splice, Clipper or Alligator Lacing



CONVEYING SURFACE

BELT DIRECTION  
OF TRAVEL



PULLEY SIDE

**BOWMAN HOLLIS MFG.**  
[WWW.BOWMANHOLLIS.COM](http://WWW.BOWMANHOLLIS.COM)

**NORTH CAROLINA**  
2925 OLD STEELE CREEK ROAD  
CHARLOTTE, NC 28208  
TOLL FREE: 888-269-2358  
LOCAL: 704-374-1500  
FAX: 704-333-5520

**GEORGIA**  
1606 ORCHARD HILL RD  
LaGRANGE, GA 30240  
TOLL FREE: 800-822-64838  
LOCAL: 706-882-6483  
FAX: 706-882-7697