

DATA SHEET

BH-105

Description: 2 ply European belt, fabric bottom, sine wave rough top

Applications: General Conveying and Inclines

Features: Anti-static, rough top cover, monofilament carcass

Technical Data:

Overall Thickness: 0.22 inches / 5.5 mm

Minimum Pulley Diameter: 2.4 inches / 60 mm

Pull for 1% Elongation: 51.0 lbs per inch / 8.9 N per mm

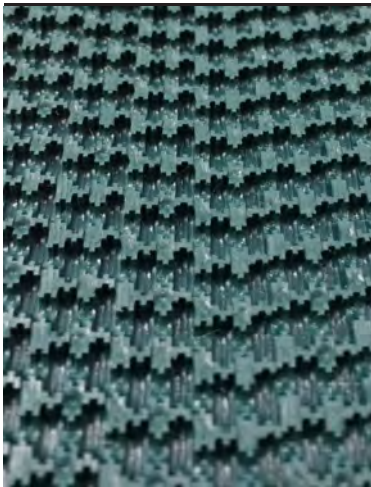
Maximum Admissible Strength: 51.0 lbs per inch / 8.9 N per mm

Coefficient of Friction vs Kraft Board - Cover: 0.95 μ

Color: Green

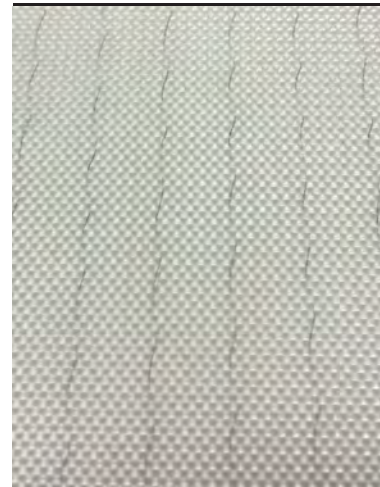
Maximum Width: 118 inches / 3000 mm

Recommended Joining Methods: Finger Splice, Clipper or Alligator Lacing



CONVEYING SURFACE

BELT DIRECTION
OF TRAVEL



PULLEY SIDE

BOWMAN HOLLIS MFG.
WWW.BOWMANHOLLIS.COM

NORTH CAROLINA
2925 OLD STEELE CREEK ROAD
CHARLOTTE, NC 28208
TOLL FREE: 888-269-2358
LOCAL: 704-374-1500
FAX: 704-333-5520

GEORGIA
1606 ORCHARD HILL RD
LaGRANGE, GA 30240
TOLL FREE: 800-822-64838
LOCAL: 706-882-6483
FAX: 706-882-7697