

## DATA SHEET

### BH-200

Description: Nylon core power transmission belt

Applications: Paper handling, light power transmission, sheeters, collators, etc.

Features: Anti-static, abrasion resistant

Technical Data:

Overall Thickness: 0.05 inches / 1.25 mm

Minimum Pulley Diameter: 1.6 inches / 40 mm

Pull for 1% Elongation: 49.0 lbs per inch / 8.6 N per mm

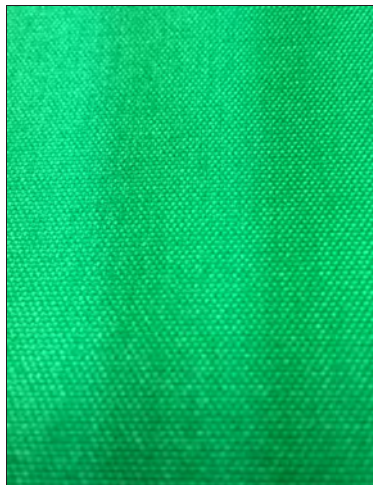
Maximum Admissible Strength: 69 lbs per inch / 12.1 N per mm

Coefficient of Friction vs Kraft Board - Cover: 0.9  $\mu$

Color: Green

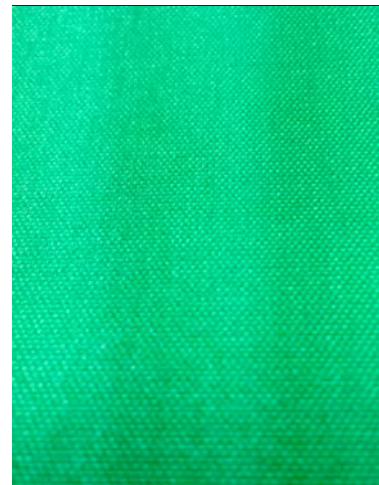
Maximum Width: 47 inches / 1200 mm

Recommended Joining Methods: Skived Splice, Clipper or Alligator Lacing.



CONVEYING SURFACE

BELT DIRECTION  
OF TRAVEL



PULLEY SIDE

**BOWMAN HOLLIS MFG.**  
[WWW.BOWMANHOLLIS.COM](http://WWW.BOWMANHOLLIS.COM)

**NORTH CAROLINA**  
2925 OLD STEELE CREEK ROAD  
CHARLOTTE, NC 28208  
TOLL FREE: 888-269-2358  
LOCAL: 704-374-1500  
FAX: 704-333-5520

**GEORGIA**  
1606 ORCHARD HILL RD  
LaGRANGE, GA 30240  
TOLL FREE: 800-822-64838  
LOCAL: 706-882-6483  
FAX: 706-882-7697