

DATA SHEET

BH-201

Description: Nylon machine tape

Applications: Paper handling, sheeters, collators

Features: Anti-static, abrasion resistant

Technical Data:

Overall Thickness: 0.04 inches / 1.0 mm

Minimum Pulley Diameter: 0.8 inches / 20 mm

Pull for 1% Elongation: 27.0 lbs per inch / 4.7 N per mm

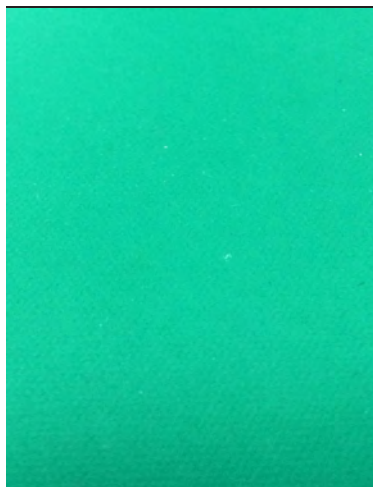
Maximum Admissible Strength: 46 lbs per inch / 8.1 N per mm

Coefficient of Friction vs Kraft Board - Cover: 0.9 μ

Color: Cover - Green / Pulley Side - Black

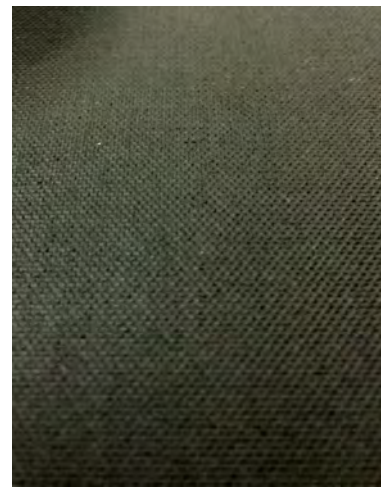
Maximum Width: 47 inches / 1200 mm

Recommended Joining Methods: Skived Splice, Clipper or Alligator Lacing.



CONVEYING SURFACE

BELT DIRECTION
OF TRAVEL



PULLEY SIDE

BOWMAN HOLLIS MFG.
WWW.BOWMANHOLLIS.COM

NORTH CAROLINA
2925 OLD STEELE CREEK ROAD
CHARLOTTE, NC 28208
TOLL FREE: 888-269-2358
LOCAL: 704-374-1500
FAX: 704-333-5520

GEORGIA
1606 ORCHARD HILL RD
LaGRANGE, GA 30240
TOLL FREE: 800-822-64838
LOCAL: 706-882-6483
FAX: 706-882-7697