



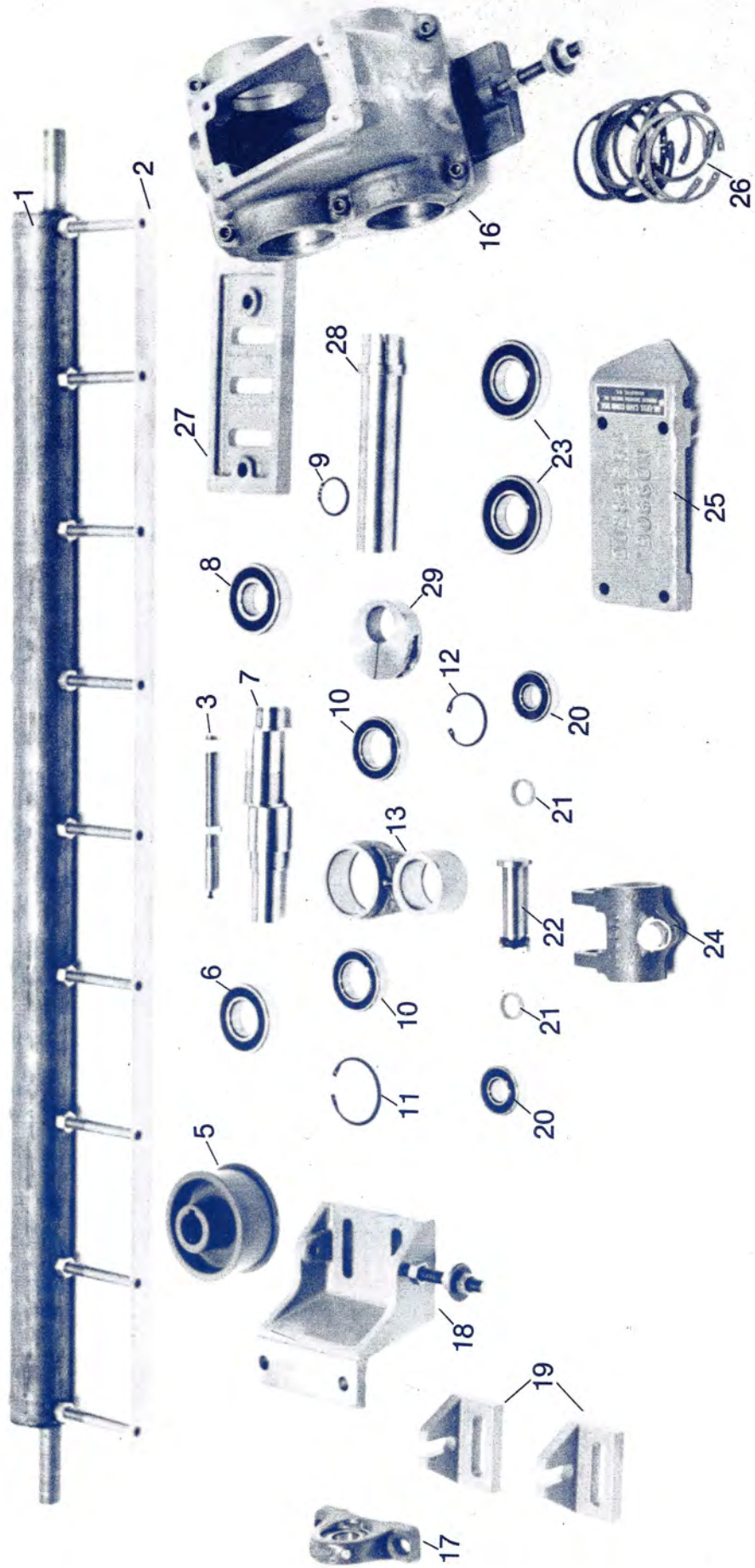
MANUFACTURING, INC.

**Parts List Catalog
for
PATENTED OIL-LESS
COMB BOX UNIT**

Straight Journals

**P.O. Box 19249
Charlotte, NC 28219
704 / 374-1500
888 / 269-2358
Fax: 704 / 333-5520**

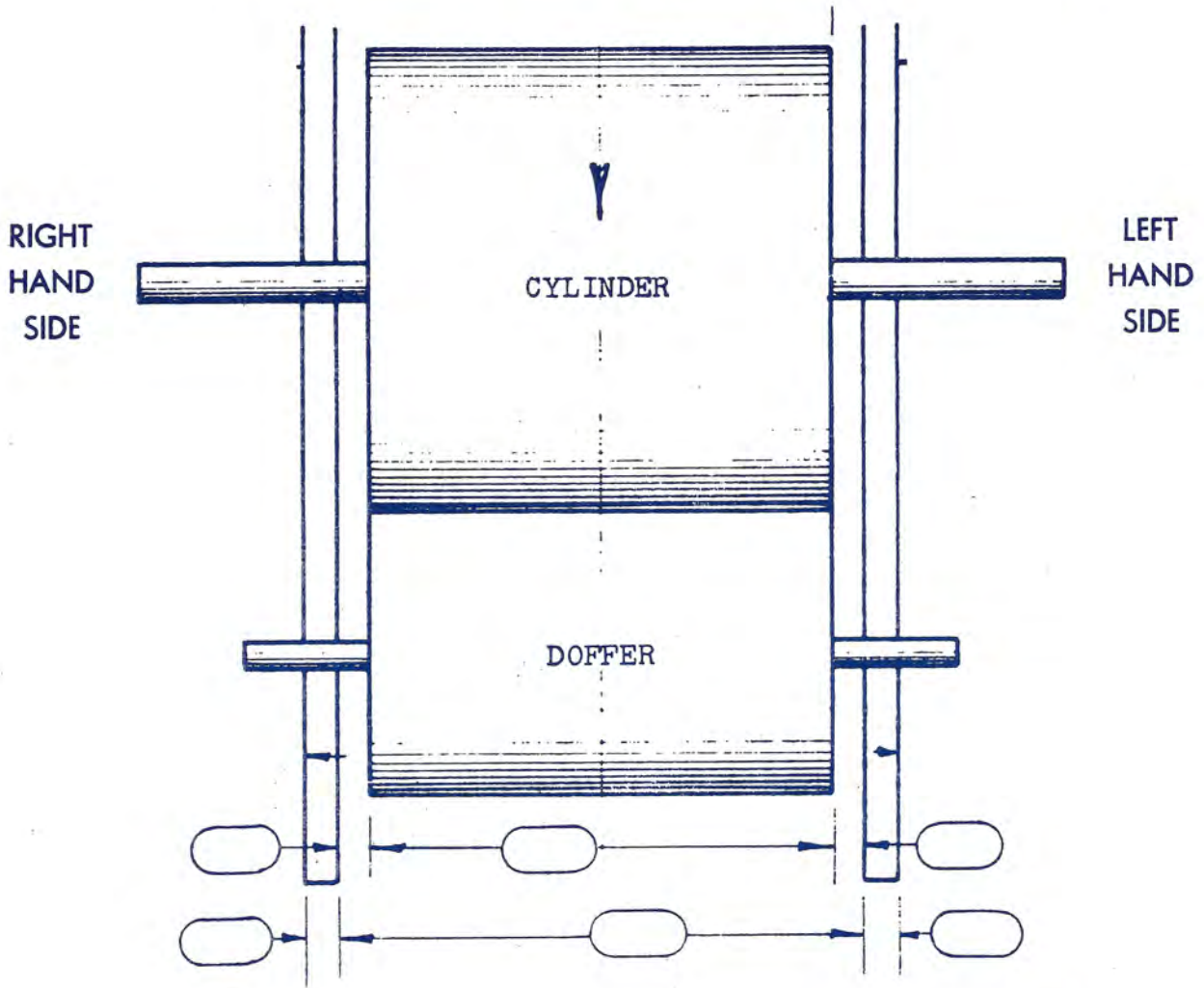
**P. O. Box 457
LaGrange, GA 30241
706 / 882-6483
800 / 822-6483
Fax: 706 / 882-7697**



PARTS LIST FOR PATENTED OIL-LESS COMB BOX UNIT

ITEM NO.	AMOUNT	PART NAME	PART NO.
1	1	Comb Bar - straight journals - state length of bar required	09237
2	1	Comb Blade - flat, angle, curved - state length required	0918
3	11	Comb Finger w/nut & screws, 1/2" dia.	09250
5	1	Comb Box Drive Pulley	05688
6	1	Bearing	099507
7	1	Eccentric Shaft	013376
8	1	Bearing	099606
9	2	External Snap Ring	0-35x1.5
10	2	Bearing	0993-07
11	2	Internal Snap Ring	0-62x2
12	2	Internal Snap Ring	0-47x1.75
13	1	Connecting Rod	05117
16	1	Comb Box Casing	01044
17	1	Pillow Block - 1" or 1.1/16" bore	0100, 0101
18	1	Outboard Bracket	09215, 09310
19	2	Adjusting Yoke	09217
20	2	Bearing	099504
21	2	Spacer	08696
22	1	Stud	02913
23	2	Bearing	099507
24	1	Clamping Bracket w/bolt	05061
25	1	Cover	09239
26	9	Internal Snap Ring	0-72x2.5
27	1	Base Plate	09216
28	1	Adapter Shaft - 1" or 1.1/16"	09240
29	1	Locking Clamp	09241

SPECIFICATIONS NEEDED FOR CARD COMB BOX UNIT ADAPTATION



SIDE OF THE CARD COMB DRIVE

RIGHT HAND
LEFT HAND

PLEASE INDICATE: SINGLE LARGE DOFFER _____
DOUBLE DOFFER _____

PLEASE INDICATE:
ADJUSTING SCREW POINTING TOWARD DOFFER _____
ADJUSTING SCREW POINTING AWAY FROM DOFFER _____