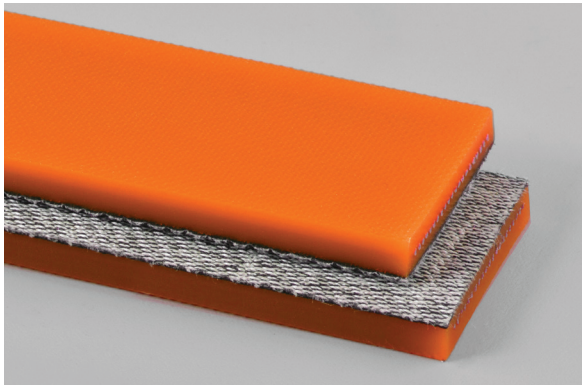
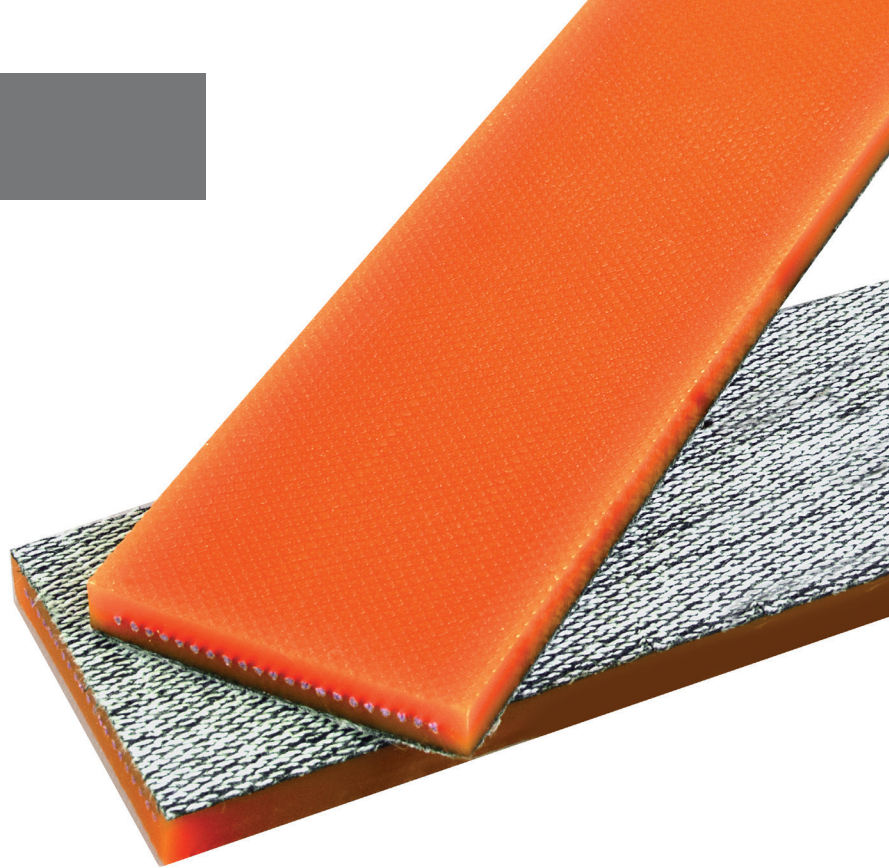


# Live Roller Belts (LRB)

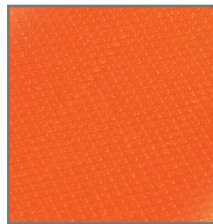
Live roller belts are used on belt under roller style conveyors that move boxed products over distances of 300+ feet in distribution centers.

LRB-50 is orange in color and designed to be finger spliced endless. Elongation of the belt is controlled by high strength aramid cords that are encased in urethane.

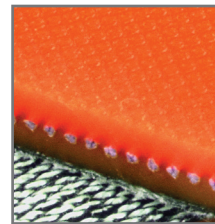
- **High Load Capacity**
- **Easy to Finger Splice**
- **5mm Thick x 45mm Wide**



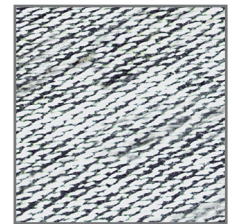
Textured  
Orange TPU



High Strength  
Aramid Cords



Knit Fabric  
Bottom Surface



Catalog #	Thickness	Tensile Member	Tensile Strength	Min. Pulley Diameter	Standard Elongation	Anti-static	Top Surface	Bottom Surface
<b>LRB-50</b>	5 mm	Aramid Cords	500 N/mm	110 mm	0.5%	Yes	Orange TPU	Knit Fabric



MANUFACTURING, INC.

**Charlotte:** 704-374-1500  
**LaGrange:** 706-882-6483  
[www.bowmanhollis.com](http://www.bowmanhollis.com)